

MOD / NATO Disposals

ilitary vehicles and equipment for sale

www.modsurplus.co.uk

Tel: +44 (0)1302-954007

[Return to Homepage](#) | E-Mail: sales@modsurplus.co.uk



REQUEST A QUOTE

or call us on UK +44(0)1302-954007

Description / Ref

Hagglund BV206 Multi-Purpose Vehicle - 50253

Photo (a gallery of photos is provided below - *where available*)



Details

Fresh Out of Production

Click the following link to get a detailed quote...



REQUEST A QUOTE

All Terrain Multi Purpose Vehicle

This vehicle is ideal for any situations where the terrain is impossible to cross by normal everyday vehicles making it an ideal choice for energy company's or councils or emergency services.

With a bespoke built body with large opening doors on gas struts and a cavernous interior into which equipment or even a water/fuel tank could be installed.

The external lockers provide storage space and are also prepared with a protective coating to allow for washing out.

It is also fitted with bull bar and 2500kg electric winch.

We can outfit these vehicles to suit a customers requirements to meet a number of roll requirements including for example:

- Dedicated Fire Fighting unit
- Rescue Unit
- Flood Unit
- Ambulance

Videos (if available)



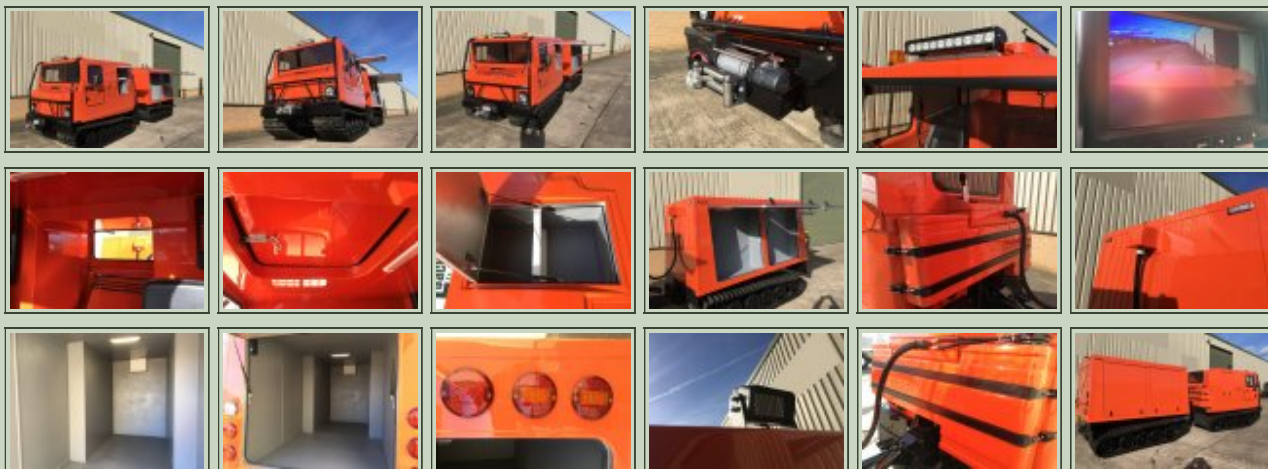
Category	Hagglund Overland Vehicles	Length	
Manufacturer	Hagglund	Height	
Engine	Ford 4 Cylinder Turbo Diesel	Width	
Gearbox	Mercedes Automatic	GVW	
Brakes	Disc on Drive Shaft	Hrs_Kms	1,000 - 1,500kms
Steering	PAS LHD	Date into Service	
Tyres	Tracks	Year of Manufacture	
Max Load		Qty Available	1
Electrics	24v	Export Requirements ...more	SIEL Licence Required



REQUEST A QUOTE

or call us on UK +44(0)1302-954007

Photo Gallery





■
All prices quoted are GBP U.K. Pounds Sterling Ex. Works excluding VAT where applicable and shipping / associated costs.

■
Vehicles advertised are subject to remaining unsold.

■
All prices quoted are based on **"per individual unit"** purchased, any reductions on advertised price for multiple item orders is subject to negotiation and is conducted at the time of inspection or provision of LOI.

■
Photo's shown above may represent a vehicle type rather than an actual vehicle, vehicles are available serviced and painted to customers preference

■
An export licence may be required for items sold to customers outside of the U.K.
FOR MORE INFORMATION ON EXPORT LICENCING PROCEDURES

[CLICK HERE](#)

FOR INFORMATION ON CURRENT EU EMBARGOES

[CLICK HERE](#)