

MOD / NATO Disposals

ilitary vehicles and equipment for sale

www.modsurplus.co.uk

Tel: +44 (0)1302-954007

[Return to Homepage](#) | E-Mail: sales@modsurplus.co.uk



REQUEST A QUOTE

or call us on UK +44(0)1302-954007

Description / Ref

Hagglunds Bv206 Load Carrier with Crane - 50303

Photo (a gallery of photos is provided below - where available)



Details

Click the following link to get a detailed quote...



REQUEST A QUOTE

Hagglunds has become a well known brand in the civilian market. These extreme vehicles are capable of travelling on roads at speeds of up to 55km/h.

Also capable of negotiating up to 60% gradients, and they have less ground pressure than half a man's footprint.

These are the ultimate ATV.

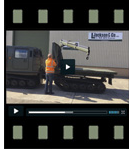
Shown here is a cargo variant fitted with a flat bed cargo body with a crane for self loading.

The bed is constructed of high grade aluminium with tie down s along the length of each side

A large integrated drawer is provided with access from the rear of the bed.

There are two manually deployed support legs on each side.

Videos (if available)



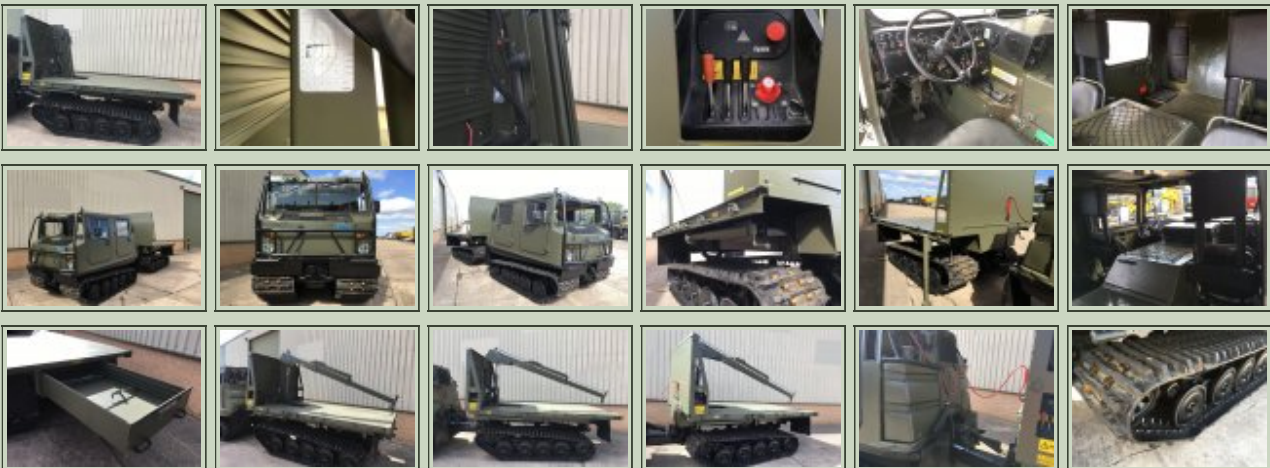
Category	Hagglund Overland Vehicles	Length	6.20m
Manufacturer	Hagglund	Height	2.0m
Engine	Choice of engines	Width	1.80m
Gearbox	MB fully automatic with 4 forward gears and 1 reverse WGA-040	GVW	6,000kg
Brakes	Hydraulic on transmission	Hrs_Kms	1,000 - 1,500kms
Steering	Power assisted centre point	Date into Service	
Tyres	Rubber tracks with steel inserts	Year of Manufacture	
Max Load	2,250kg	Qty Available	5
Electrics	24 volt	Export Requirements ...more	OGEL/SIEL Licence Required



REQUEST A QUOTE

or call us on UK +44(0)1302-954007

Photo Gallery





■
All prices quoted are GBP U.K. Pounds Sterling Ex. Works excluding VAT where applicable and shipping / associated costs.

■
Vehicles advertised are subject to remaining unsold.

■
All prices quoted are based on **"per individual unit"** purchased, any reductions on advertised price for multiple item orders is subject to negotiation and is conducted at the time of inspection or provision of LOI.

■
Photo's shown above may represent a vehicle type rather than an actual vehicle, vehicles are available serviced and painted to customers preference

■
An export licence may be required for items sold to customers outside of the U.K.

FOR MORE INFORMATION ON EXPORT LICENCING PROCEDURES

[CLICK HERE](#)

FOR INFORMATION ON CURRENT EU EMBARGOES

[CLICK HERE](#)