

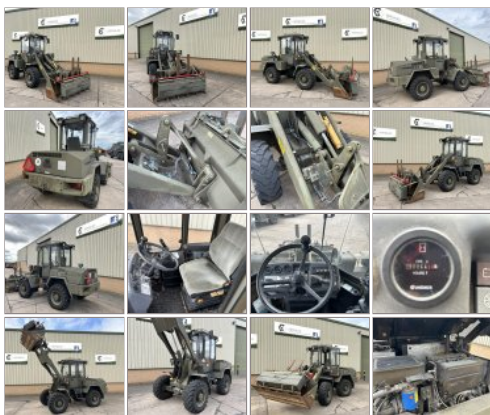
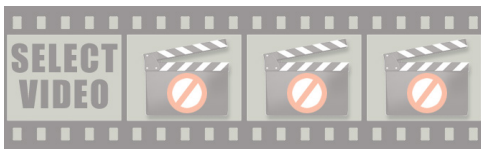
www.govsales.co.uk - The UK's leading suppliers of ex. military vehicles

Govsales - Ex MoD Surplus, Ex Army Trucks, Vehicles & Equipment

Liebherr L508 Wheeled Loader - MoD Ref: 50522



Share on Facebook



Liebherr L508 Wheeled Loader - MoD Ref: 50522

Details

Liebherr L508 Wheeled Loader

Just arrived direct from the military with only 1,144 hours

Quick hitch attachment

Bucket and forklift attachment

4x4

Webasto cab heater

Lift height 3.35M

CATEGORY	Wheeled Loaders
MANUFACTURER	Liebherr
ENGINE	Deutz BF 4L 4 cylinder turbo
GEARBOX	Hydrostatic
BRAKES	Hydraulic
STEERING	Centre point articulation
TYRES	12.5-20
ELECTRICS	24 volt
L x W x H	5.80m x 2.00m x 2.80m
GROSS WEIGHT	6900 Kg
HOURS / MILEAGE	1,144 Hours
YEAR OF MANUFACTURE	1995
QTY AVAILABLE	1
EXPORT REQUIREMENTS	OGEL/SIEL Licence Required
...more	

PRICE



All prices quoted are GBP U.K. Pounds Sterling Ex. Works excluding VAT where applicable and shipping / associated costs.

Vehicles advertised are subject to remaining unsold. All prices quoted are based on "per individual unit" purchased, any reductions on advertised price for multiple item orders is subject to negotiation and is conducted at the time of inspection or provision of LOI. For complete Terms & Conditions See Main Website. Photo's shown above may represent a vehicle type rather than an actual vehicle, vehicles are available serviced and painted to customers preference. An export licence may be required

for items sold to customers outside of the U.K.



Liebherr L508 Wheeled Loader

Govsales of Ex Military vehicles for sale, Ex Military Land Rovers for sale, Ex army trucks for sale,
MoD Surplus, Ex MoD and NATO Disposals, Ex Military and Nato Plant and Equipment